



## **The National BIM Library**

BIM Object Guide: Radon Stop 400 Pipe Gasket Drain



Version 1.0

6<sup>th</sup> November 2010

[www.nationalBIMlibrary.com](http://www.nationalBIMlibrary.com)

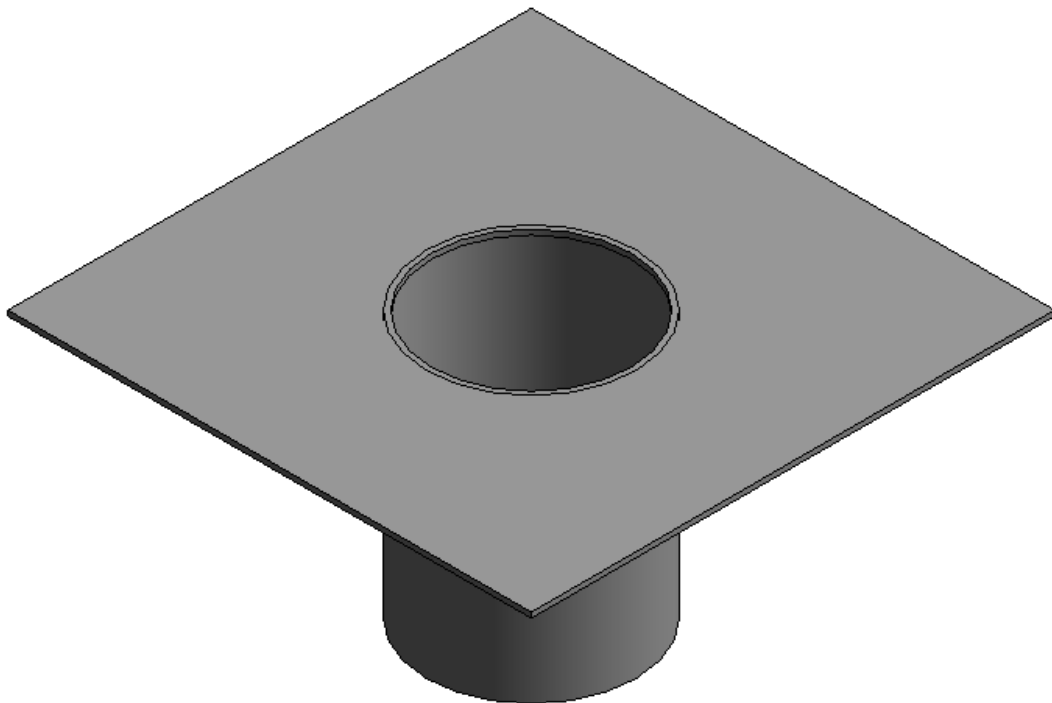
### Table of Contents

1.0 Introduction .....	3
1.1 Naming .....	4
2.0 Parameters.....	5
2.1 National BIM Library Parameters .....	5
2.2 Manufacturers Parameters.....	5
2.3 IFC Parameters .....	6
2.4 COBie Parameters.....	7
3.0 Abbreviations .....	9

### 1.0 Introduction

This guide covers the use of Triton Systems Radon Stop 400 Pipe Gasket Drain included within the National BIM Library.

#### Radon Stop 400 Pipe Gasket Drain



All products listed below are included in the following file:  
nbl\_TritonSystems\_RadonStop400PipeGasketDrain

Radon Stop 400 Pipe Gasket Drain

### 1.1 Naming

National BIM Library objects are named to identify their type and configuration. Fields are segregated using an under bar (\_) and information within each field is segregated using hyphens (-). Fields are abbreviated to reduce characters and capitals used at the start of each abbreviation to aid readability.

File name and objects are named as below:

File name

**Field1** *Author\_***Field2** *Category\_***Field3** *Manufacturer\_***Field4** *Product Range*

Object

**Field1** *Author\_***Field2** *Manufacturer\_***Field3** *Product*

### 2.0 Parameters

Parameters included in the National BIM Library Triton Systems Radon Stop 400 Pipe Gasket Drain BIM object are as follows:

#### 2.1 National BIM Library Parameters

<b>Author</b>	Authors Name.
<b>BIMObjectName</b>	Name of the BIM object as it will appear in Software. Using NBL naming procedure.
<b>Description</b>	The full description of a product or system.
<b>Help</b>	National BIM Library website.
<b>IssueDate</b>	The date the object goes live.
<b>Manufacturer URL</b>	Manufacturer's main website link.
<b>NBSDescription</b>	NBS Uniclass title.
<b>NBSReference</b>	NBS Uniclass section/clause number.
<b>Version</b>	The version number of the object.

#### 2.2 Manufacturers Parameters

<b>StandardThickness</b>	Thickness of the material from which the object is constructed. Measured in units of [mm].
<b>TensileStrength</b>	The resistance of a material to breaking under tension. Measure in [N/mm <sup>2</sup> ]
<b>TearResistance</b>	Measurement of how well a material can withstand the effects of tearing. Measured in units of [N]
<b>RadonResistance</b>	A measurement of how resistant a material is against Radon. Measured in units of [m <sup>2</sup> .s.Pa/g]

### 2.3 IFC Parameters

Note: IFC definitions have been obtained from BuildingSmart IFC2x3 website (<http://buildingsmart-tech.org>).

<b>Material</b>	Main material of the covering
<b>ShearModulus</b>	A measure of the shear modulus of elasticity of the material. Usually measured in [N/50 mm]
<b>VaporPermeability</b>	That property of a sheet which allows the passage of a vapor. Usually measured in [kg/s m Pa].

### 2.4 COBie Parameters

The following COBie parameters have been included within Triton Systems Radon Stop 400 Pipe Gasket Drain BIM objects and can be used to prepare COBie data schedules:

<b>AccessibilityPerformance</b>	Accessibility issue(s) which the product satisfies.
<b>AssetIdentifier</b>	The asset identifier assigned to an occurrence of a product (prior to handover).
<b>BarCode</b>	The identity of the bar code (or rfid) given to an occurrence of the product.
<b>CodePerformance</b>	Code Compliance requirement(s) which the product satisfies.
<b>Colour</b>	Characteristic or primary colour of product.
<b>Constituents</b>	Optional constituent features, parts or finishes.
<b>Cost</b>	Cost impact of replacement process.
<b>Documentation</b>	Location (Uniform Resource Information) for further product information.
<b>DocumentReference</b>	Location (Uniform Resource Information) for the source or updates to this product information.
<b>Features</b>	Other important characteristics or features relevant to product specification.
<b>Finish</b>	Characteristic or primary finish of product.
<b>Grade</b>	Standard grading which the product corresponds.
<b>InstallationDate</b>	The date that the manufactured item was installed.
<b>LifeCyclePhase</b>	Life Cycle Phase as defined in ISO 15978
<b>Manufacturer</b>	The organization that manufactured or assembled the item.
<b>MethodOfMeasurement</b>	Method of measurement
<b>ModelLabel</b>	The model number assigned by manufacturer.

<b>ModelReference</b>	The name used by the manufacturer
<b>NominalHeight</b>	Typically the vertical or secondary characteristic dimension.
<b>NominalLength</b>	Typically the larger or primary horizontal dimension.
<b>NominalWidth</b>	Typically the characteristic or secondary horizontal or characteristic dimension.
<b>Process</b>	Specification of process
<b>ProductionYear</b>	The year of production of the manufactured item.
<b>ReferenceStandard</b>	Reference standard(s) to which the product is compliant.
<b>ReplacementCost</b>	An indicative cost for unit replacement.
<b>SerialNumber</b>	The serial number assigned to an occurrence of a product by the manufacturer.
<b>ServiceLifeDuration</b>	The service life that an artefact is expected to have under current operating conditions.
<b>ServiceLifeType</b>	The typical service life that is quoted for an artefact under reference operating conditions.
<b>Shape</b>	Characteristic shape of product.
<b>Size</b>	Characteristic size of product.
<b>SustainabilityPerformance</b>	Sustainability issue(s) which the product satisfies.
<b>TagNumber</b>	The tag number assigned to an occurrence of a product
<b>WarrantyDescription</b>	Description of the warranty.
<b>WarrantyDurationLabour</b>	Duration of labour warranty (years).
<b>WarrantyDurationParts</b>	Duration of parts warranty (years).
<b>WarrantyGuarantorLabour</b>	Organization acting as guarantor of labour warranty.
<b>WarrantyGuarantorParts</b>	Organization acting as guarantor of parts warranty.
<b>WarrantyStartDate</b>	The date on which the warranty commences.



### 3.0 Abbreviations

<b>clk</b>	Cloak
<b>crn</b>	Corner
<b>ext</b>	External
<b>nbl</b>	National BIM Library
<b>stp</b>	Stop